

- ### KEYNOTES
- 005 LIQUID APPLIED TRAFFIC COATING
 - 025 CONCRETE FILLED PIPE BOLLARD
 - 028 GALV HANDRAILS
 - 036 FLOOR SINK. REFER TO PLUMBING DRAWINGS
 - 037 LINEN CHUTE WITH 2HR RATED BRUSHED STAINLESS STEEL HOPPER DOOR
 - 048 FOOD SERVICE EQUIPMENT SHOWN FOR REFERENCE ONLY. REFER TO FOOD SERVICE DRAWINGS
 - 063 HOSE BIB. SEE PLUMBING DWGS
 - 079 10x10 COMED VAULT ACCESS PANEL RATED FOR TRUCK WHEEL LOAD
 - 083 PLASTIC LAMINATE COUNTER TOP W/ ADJUSTABLE SHELF BASE CABINET
 - 085 COMED CONCRETE ENCASED CONDUIT
 - 100 GALVANIZED STEEL PIT LADDER
 - 101 SUMP PIT W/ COVER. REFER TO PLUMBING DRAWINGS
 - 107 UNDERCOUNTER GLASS WASHER
 - 109 FOOT OPERATED EYE WASH STATION. OSHA COMPLIANT
 - 530 PLASTIC LAMINATE COUNTER TOP LINE OF DEPRESSED SLAB. REFER TO STRUCTURAL AND/OR FOOD SERVICE DRAWINGS
 - 764 FLOOR DRAIN. REFER TO PLUMBING DRAWINGS
-
- Metropolitan Pier and Exposition Authority**
301 East Cermak Road, Chicago, IL 60616
- McCormick Place HQ Hotel**
2121 South Prairie Avenue, Chicago, IL 60616
- Goettsch Partners**
Architect
224 South Michigan Avenue, Suite 1700, Chicago, IL 60604
- Simone Deary Design Group**
Interior Design
605 North Michigan Avenue, Suite 350, Chicago, IL 60611
- Magnusson Klemencic Associates, Inc.**
Structural Engineer
111 South Wacker Drive, Suite 3390, Chicago, IL 60606
- F.E. Moran**
Mechanical Design Build Contractor
226 Carlson Drive, Northbrook, IL 60062
- Cosentini Associates**
Electrical & Plumbing Engineer
1060 West Division Street, Chicago, IL 60642
- Great Lakes Plumbing and Heating**
Fire Protection Design Build Contractor
4521 West Diversy Avenue, Chicago, IL 60639
- Gibson**
Audio Visual, Security, & Telecommunications
3100 Woodstock Drive, Downers Grove, IL 60515
- Moody Nolan**
Wayfinding / LEED
209 South LaSalle Street, Suite 820, Chicago, IL 60604
- Site Design Group, Ltd.**
Landscape Design
888 South Michigan Avenue, Suite 1000, Chicago, IL 60605
- Terra Engineering, Ltd.**
Civil Engineer
225 West Ohio Street, 4th Floor, Chicago, IL 60654
- Anne Kustner Lighting Design, Ltd.**
Lighting Consultant
900 Isabelle Street, Evanston, IL 60201
- Catt Lyon Design + Wayfinding**
Wayfinding / Graphics
53 West Jackson Boulevard, Suite 362, Chicago, IL 60604
- Ricca Design Studios**
Food Service
5325 South Valerita Way, Greenwood Village, CO 80111
- Klein and Hoffman, Inc.**
Structural & Masonry Engineer (for ABC Building)
150 South Wacker Drive, Suite 1900, Chicago, IL 60606

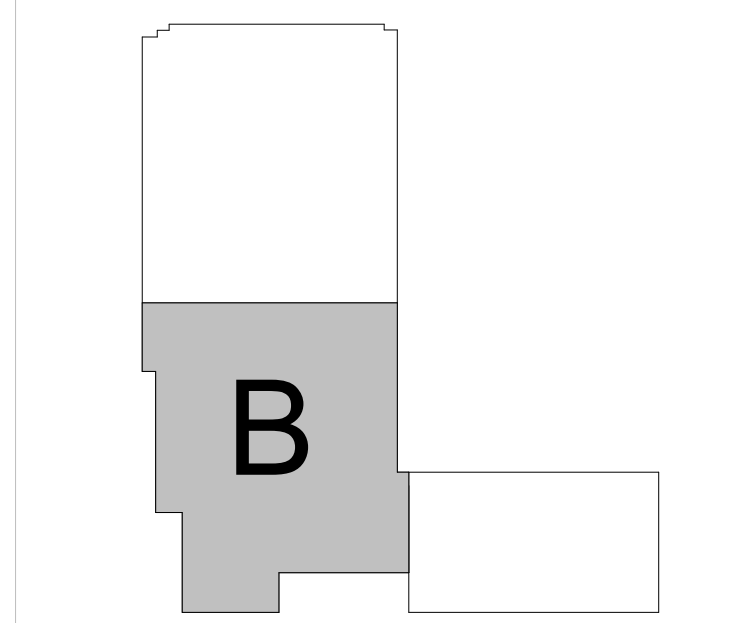
- ### GENERAL NOTES
- A. ALL WALLS OF DOCK AREA ON LEVEL 01 TO BE CMU.
 - B. REFER TO SHEET A6.003 FOR REQUIRED STC RATINGS IN BALLROOM, MEETING ROOM, AND OFFICE PARTITIONS.
 - C. REFER TO G3 SERIES DRAWINGS FOR EGRESS AND OCCUPANCY PLANS.
 - D. SEE LANDSCAPE DRAWINGS FOR SIDEWALK SCORING COLOR AND FINISH.
 - E. SEE CIVIL DRAWINGS FOR SITE ELEVATIONS, DRIVEWAY AND CURB SECTIONS, AND UTILITY INFORMATION.
 - F. SEE CIVIL DRAWINGS FOR SIDEWALK HYDRANTS AND HOSE BIB LOCATIONS.
 - G. SEE ELECTRICAL DRAWINGS FOR PLANTER RECEPTANCE.
 - H. KITCHEN EQUIPMENT SHOWN FOR REFERENCE ONLY. REFER TO FOOD SERVICE DRAWINGS.
 - I. SEE FOOD SERVICE DWGS FOR EQUIPMENT BASE LOCATIONS WHERE REQUIRED. GC TO PROVIDE CONCRETE FILL AT EQUIPMENT BASE LOCATIONS.
 - J. DESIGNER/BLDG TO ENSURE ALL WALLS AND/OR CEILINGS ARE PROPERLY REINFORCED TO SUPPORT ALL WALL/CILING FOOD SERVICE EQUIPMENT. SEE FOOD SERVICE DWGS.
 - K. PITCH FLOORS TO AREA DRAINS IN FOOD SERVICE AREAS. REFER TO FOOD SERVICE DWGS.
 - L. REFER TO G01 & G02 FOR BACK OF HOUSE FINISH SCHEDULE. REFER TO ID DRAWINGS FOR FRONT OF HOUSE FINISH SCHEDULE.
 - M. FOR INTERIOR BOH FINISHES REFER TO SHEETS G0.401 AND G0.402.
 - N. PROVIDE 6" CONCRETE CURB UNDER ALL FOOD PREPARATION AREA, COMED VAULT ROOM, AND ANY WET AREA PARTITIONS.
 - O. PROVIDE FIRE TREATED 2x8x3x4 PLYWOOD AS WALL PROTECTION AND STAINLESS STEEL CORNER GUARDS AT ALL SERVICE CORRIDORS.
 - P. PROVIDE LADDERS AND ACCESS PANELS FOR MECHANICAL MEZANINES AS REQUIRED.
 - Q. SEE FOOD SERVICE DWGS FOR ALL REQUIRED SLAB DEPRESSIONS. COORDINATE AS REQUIRED. REFER TO A9 SERIES FOR EXTERIOR WALL AND WINDOW INFORMATION FOR ABC BUILDING.
 - S. PER SPEC 104413, FIRE PROTECTION CABINETS (EQUIPMENT) TO BE LISTED AND LABELED TO COMPLY WITH REQUIREMENTS IN ASTM E814 FOR FIRE RESISTANCE RATING OF WALLS WHERE THEY ARE INSTALLED.

- ### CONST. PLAN LEGEND
- 101 DOOR REFERENCE TYPE SEE SHEET A6.200 - A6.201
 - 11 WALL TYPE REFERENCE SEE SHEET A6.600
 - 04 KEYNOTE REFERENCE
 - - - INDICATES POURED CONC. CURB. SEE NOTE N
- ### GRAPHIC SCALES
- 1/16" = 1'-0"
- 1/8" = 1'-0"
- 1/4" = 1'-0"
- 1/2" = 1'-0"
- 1" = 1'-0"
- 1-1/2" = 1'-0"
- 3" = 1'-0"

Seal / Signature

29 SEPTEMBER 2017
ISSUED FOR FINAL
RECORD SET

KEY PLAN



Project Name	McCormick Place HQ Hotel	14400
Project Address	2121 South Prairie Avenue Chicago, IL 60616	
Scale	1/8" = 1'-0"	
Description	FLOOR PLAN - LEVEL LL1 - SEGMENT B	

A1.10LL1B

1 CONSTRUCTION PLAN - LEVEL LL1 - SEGMENT B
SCALE: 1/8" = 1'-0"