

McCormick Place Event Center/Wintrust Arena

200 E CERMAK ROAD, CHICAGO, ILLINOIS 60616



FLOOR PLAN GENERAL NOTES

- ALL DIMENSIONS ARE TO FACE OF WALL UNLESS NOTED OTHERWISE.
- SEE STRUCTURAL DRAWINGS FOR LOCATIONS OF ALL STEEL REINFORCING IN WALL & FLOOR CONSTRUCTION.
- SEE FINISH SCHEDULE FOR ADDITIONAL INFORMATION OF LOCATIONS AND TYPES OF FINISH MATERIALS.
- SEE ELEVATIONS AND STRUCTURAL DRAWINGS FOR LOCATIONS OF EXPANSION & CONTROL JOINTS AS REQUIRED TO COMPLY WITH MAXIMUM SPACING REQUIREMENTS IN SPECIFICATIONS AND NATIONAL MASONRY INSTITUTE.
- MECHANICAL & ELECTRICAL EQUIPMENT SHALL BE ON HOUSEKEEPING PADS. PADS ARE TO BE PROVIDED BY THE TRADE SUPPLYING THE EQUIPMENT. SEE MECHANICAL AND ELECTRICAL DRAWINGS FOR ADDITIONAL INFORMATION. WORK TO BE COORDINATED THROUGH THE GENERAL TRADES CONTRACTOR.
- FOR TYPICAL RESTROOM WALLS ACCESSORIES AND MOUNTING HEIGHTS INCLUDING ACCESSIBILITY REQUIREMENTS - SEE SHEET A640.
- FOR SEAT LAYOUTS, REFER TO SEATING DIAGRAMS, SHEETS A600-A607.
- SEE "D" SERIES OF DRAWINGS FOR FOOD SERVICE EQUIPMENT DESIGNATIONS.
- ALL EXPOSED PLUMBING PIPES UNDER SINKS ARE TO BE INSULATED PER AIA CODE.
- ALL MET WALL TOILET LOCATIONS AND HAND DRYER LOCATIONS ARE TO RECEIVE CERAMIC TILE PARTIAL HEIGHT OR EQUAL TO THE HEIGHT OF THE MIRROR TYPICAL EXCEPT FOR TEAM ROOMS AND SHOWERS WHICH ARE TO HAVE FULL HEIGHT TILE. SEE ELEVATIONS AND FINISH SCHEDULE.
- WATER CLOSET VALVETONES TO ALSO CROSS THE CHASE UNO.
- PROVIDE FALL PROTECTION SYSTEM AT ALL ROSSING BEAMS.
- FURNITURE SHOWN IN LAYOUT FOR REFERENCE ONLY.
- SEE SHEETS A300 AND A301 FOR ACCESSIBLE CLEARANCES & DIMENSIONS OF DOORS.

CODED NOTE LEGEND

- FIRE DEPARTMENT SWAB/SE CONNECTION LOCATION REFER TO PLUMBING.
- ALIGN FEATURES.
- STRUCTURAL CAST IN PLACE CONCRETE WALL REFER TO STRUCTURAL DRAWINGS FOR CONSTRUCTION. FIRE RATING TO BE INDICATED FOR FULL HEIGHT OF WALL AND ALL PENETRATIONS. WHERE INDICATED INCLUDE 78" FURRING AND 5/8" GYPSUM BOARD.
- CONTRACTOR TO PROVIDE BLOCKING IN WALL FOR FUTURE GRAB BARS.
- PAINT 6X6 STRIPS ON FLOOR CORNER LOCATIONS WITH TECH-MESH/SHOCKE.
- SEE HYDROTHERAPY NOTES, SHEET A104.
- DOUBLE CHANNEL TO PROVIDE ROSSING ACCESS.
- LED SCREEN - FINAL ENGINEERING CONNECTIONS AND DETAILS PENDING MANUFACTURER SELECTION. SEE SECTION DETAILS ON SHEET A510.
- SHIRT CHUTE AT FIRE RATED SHAFTWALL ENCLOSURE TO MAINTAIN SHAFT RATING. CLARIFY COORDINATE PENETRATIONS WITH MEP CONTRACTORS. DUCTS TO BE FRAMED FLOOR WITH TYPICAL DETAILS WITH FIRE BRICKERS, PIPING AND OTHER PENETRATION TO BE FIRE RATED PENETRATIONS IN FLOOR. FINAL LAYOUT TO BE REVIEWED BY STRUCTURAL ENGINEER & ARCHITECT.
- PROVIDE BULLET RESISTANT FIBERGLASS PANELS FULL LENGTH OF WALL UP TO 8'-0". MAINTAIN RATING AS REQUIRED BY THICKENING THE DRYWALL ABOVE SO FINISH FACES REMAIN FLUSH.
- CONCRETE BOLLARD - SEE 14A665.

PLAN LEGEND

- CASEWORK
 - PERFORATED ACOUSTICAL PANELS
- ## RATED WALL LEGEND
- 1 HOUR FIRE RATED PARTITION TO DECK
 - 2 HOUR FIRE RATED PARTITION TO DECK
 - 3 HOUR FIRE RATED PARTITION TO DECK
 - 4 HOUR FIRE RATED PARTITION TO DECK

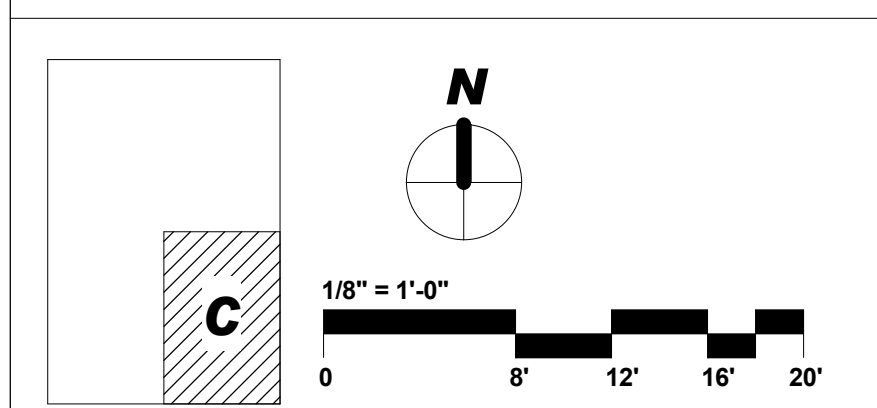
KEY NOTES

- 08 71 00 A DOOR CONTROL BUTTON AND POST
- 09 27 13 B GLASS FIBER REINFORCED CYPRUS RECTANGULAR COLUMN ENCLOSURE

LOCKER SCHEDULE - 5% OF LOCKERS TO BE ADA ACCESSIBLE. COORDINATE NUMBER AND LOCATION WITH ARCHITECT.

ROOM NUMBER	ROOM NAME	LOCKER TYPE	TOTAL LOCKERS
004A	HEAD COACH OFFICE	Z-TYPE LOCKER (12'x12')	6
004B	ASSISTANT COACH LOCKER ROOM	CUSTOM TEAM LOCKER	1
004D	MENS TEAM LOCKER ROOM	CUSTOM TEAM LOCKER	20
009A	HEAD COACH OFFICE	CUSTOM TEAM LOCKER	1
009B	ASSISTANT COACH LOCKER ROOM	CUSTOM TEAM LOCKER	1
009D	WOMENS TEAM LOCKER	CUSTOM TEAM LOCKER	20
040	CONCERT GREEN ROOM	Z-TYPE LOCKER (12'x12')	6
043A	COACH OFFICE	METAL TEAM LOCKER	1
043B	AUXILIARY LOCKER ROOM	METAL TEAM LOCKER	19
044A	COACH OFFICE	METAL TEAM LOCKER	1
044B	AUXILIARY LOCKER ROOM	METAL TEAM LOCKER	1
051A	STAFF MEN LOCKER ROOM	FULL HEIGHT LOCKERS (12'x12')	20
051B	STAFF WOMEN LOCKER ROOM	FULL HEIGHT LOCKERS (12'x12')	20
051C	STAFF MEN LOCKER ROOM	10 HEIGHT LOCKERS (12'x12')	240
051D	STAFF WOMEN LOCKER ROOM	10 HEIGHT LOCKERS (12'x12')	240
051E	STAFF MEN LOCKER ROOM	13 HEIGHT LOCKERS (12'x12')	240
051F	STAFF WOMEN LOCKER ROOM	13 HEIGHT LOCKERS (12'x12')	240

KEY PLAN



#	DATE	CHANGE DESCRIPTION
1	12/14/15	FULL BUILDING PERMIT CORRECTION
2	1/25/16	FULL BUILDING PERMIT CORRECTION #2
3	7/26/16	RFI 0363

MOODY·NOLAN
RESPONSIVE ARCHITECTURE

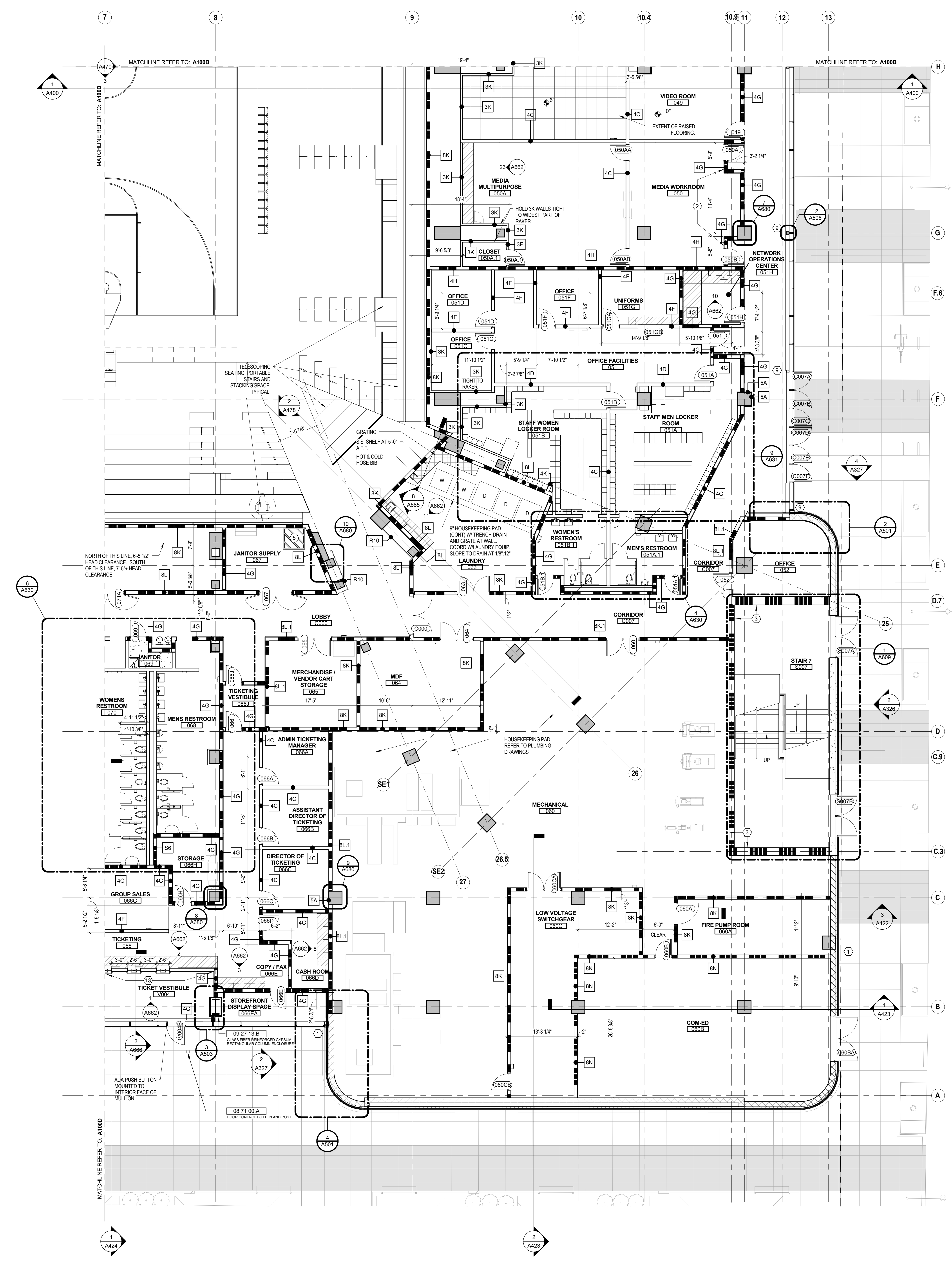
PROGRESS DRAWING NOT FOR CONSTRUCTION

The Rookery Building Phone: (312) 929-2516
209 S. LaSalle St. Suite 820 Fax: (312) 929-4873
Chicago, IL 60604 www.moody-nolan.com

Desg. Coord.: Author Tech. Coord.: Checker 14175.01

EVENT LEVEL PLAN - AREA A100C **A100C**

RECORD DOCUMENTS 03/29/2018



1 PLAN EVENT LEVEL QUADRANT PLAN - AREA 'C'
1/8" = 1'-0"

© 2014 Moody/Nolan Inc. PRINT DATE: 3/29/2018 8:09:48 PM FILE INFO: C:\SSD\Local\Revit\Projects\2018\Project\14175_A100C_A100C_ARCHI_L0001.dwg\moody-nolan.com.rvt