

- NOTES:**
1. NO ROOF PENETRATIONS ALLOWED
 2. INSTALLED EQUIPMENT MUST NOT INTERFERE WITH WINDOW WASHING EQUIPMENT OR ANY MARRIOTT MAINTENANCE OPERATIONS; FURTHER MUST NOT INTERFERE WITH ANY DAS, PUBLIC SAFETY OR OTHER COMMUNICATIONS EQUIPMENT OR SYSTEMS
 3. POWER IS AVAILABLE ON THE ROOF - LICENSEE MUST PAY FOR ANY USE
 4. INSTALLATIONS ON PARAPET ARE NOT RECOMMENDED
 5. INFRASTRUCTURE COULD BE BUILT IN AV ROOM ON 44TH FLOOR. THE ROOM IS ENCLOSED AND CONDITIONED.
 6. AESTHETICS ARE VERY IMPORTANT AND ALL LOCATIONS WILL HAVE TO BE APPROVED BY MPEA AND MARRIOTT PRIOR TO INSTALLATION

1 ROOF LEVEL PLAN
SCALE: 1/8" = 1'-0"

**EXHIBIT 1
TOWER ROOF PLAN**

KEYNOTES

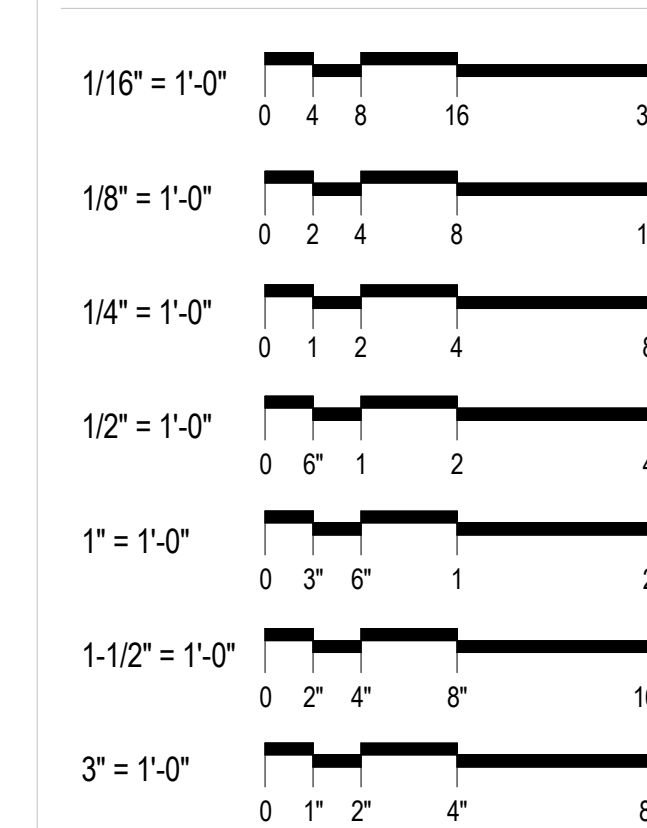
063	HOSE BIB, SEE PLUMBING DWGS
068	ROOF DRAIN
521	STAINLESS STEEL CABLE SAFETY LINE TIE BACK
731	PVC ROOFING SYSTEM R06 AT TOWER ROOF

CONST. PLAN LEGEND

□	DOOR REFERENCE TYPE
▬	WALL TYPE REFERENCE
○	KEYNOTE REFERENCE
- - -	INDICATES POURED CONC. CURB

GENERAL NOTES

GRAPHIC SCALES



City Stamp

Metropolitan Pier and Exposition Authority
301 East Cermak Road, Chicago, IL 60616

McCormick Place HQ Hotel
2121 South Prairie Avenue, Chicago, IL 60616

Goettsch Partners
Architect
224 South Michigan Avenue, Suite 1700, Chicago, IL 60604

Simeone Deary Design Group
Interior Design
605 North Michigan Avenue, Suite 360, Chicago, IL 60611

Magnusson Klemencic Associates, Inc.
Structural Engineer
111 South Wacker Drive, Suite 3390, Chicago, IL 60606

F.E. Moran
Mechanical Design Build Contractor
226 Carlson Drive, Northbrook, IL 60062

Cosentini Associates
Electrical & Plumbing Engineer
1060 West Division Street, Chicago, IL 60642

Great Lakes Plumbing and Heating
Fire Protection Design Build Contractor
4521 West Diversy Avenue, Chicago, IL 60639

Gibson
Audio Visual, Security & Telecommunications
3100 Woodstock Drive, Downers Grove, IL 60515

Moody Nolan
Associate Architect / LEED
209 South LaSalle Street, Suite 820, Chicago, IL 60604

Site Design Group, Ltd.
Landscape Design
888 South Michigan Avenue, Suite 1000, Chicago, IL 60605

Terra Engineering, Ltd.
Civil Engineer
225 West Ohio Street, 4th Floor, Chicago, IL 60654

Anne Kustner Lighting Design, Ltd.
Lighting Consultant
900 Isabelle Street, Evanston, IL 60201

Catt Lyon Design + Wayfinding
Wayfinding / Graphics
53 West Jackson Boulevard, Suite 362, Chicago, IL 60604

Ricca Design Studios
Food Service
5325 South Valerita Way, Greenwood Village, CO 80111

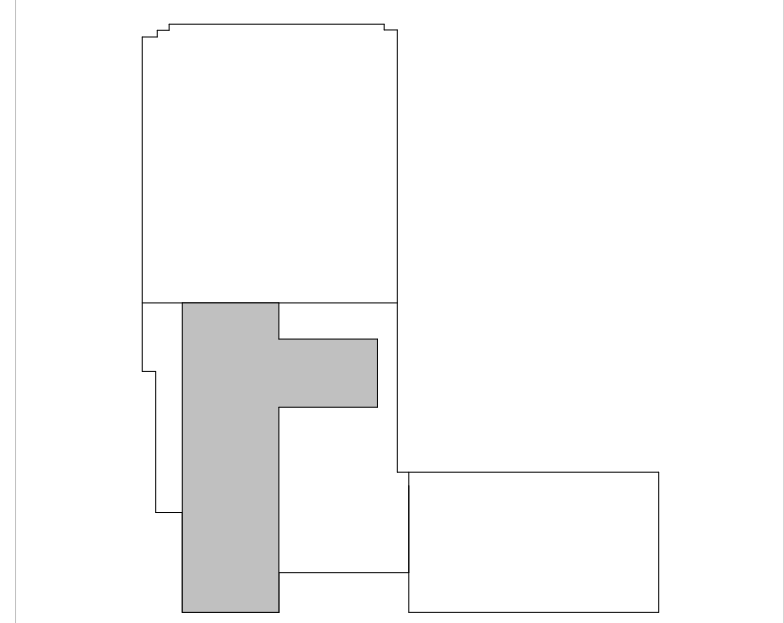
Klein and Hoffman, Inc.
Structural & Masonry Engineer (for ABC Building)
150 South Wacker Drive, Suite 1900, Chicago, IL 60606

Date	Description
01 Jun 2015	ISSUED FOR 50% CD
01 Aug 2015	ISSUED FOR FULL BUILDING PERMIT
15 Sep 2015	INTERIOR BID SET
16 Oct 2015	ISSUED FOR 100% CD
11 Dec 2015	BULLETIN 4
22 Jan 2016	BULLETIN 5
25 Mar 2016	BULLETIN 6
25 Apr 2016	BULLETIN 7
25 May 2016	BULLETIN 11
B 02 Jun 2016	REVISIONS TO FULL BUILDING PERMIT
C 22 Jul 2016	Rev. To Full Building Permit Corrections
27 Jul 2016	BULLETIN 15
25 Aug 2016	BULLETIN 16
03 Nov 2016	BULLETIN 18
08 Dec 2016	BULLETIN 19
12 Jan 2017	BULLETIN 20

Seal / Signature

29 SEPTEMBER 2017
ISSUED FOR FINAL
RECORD SET

KEY PLAN



Project Name	McCormick Place HQ Hotel	14400
Project Address	2121 South Prairie Avenue Chicago, IL 60616	
Scale	1/8" = 1'-0"	
Description	TOWER ROOF PLAN	